

# Chapter 10

## MOUNTING DETAILS OF CHASSIS EQUIPMENT

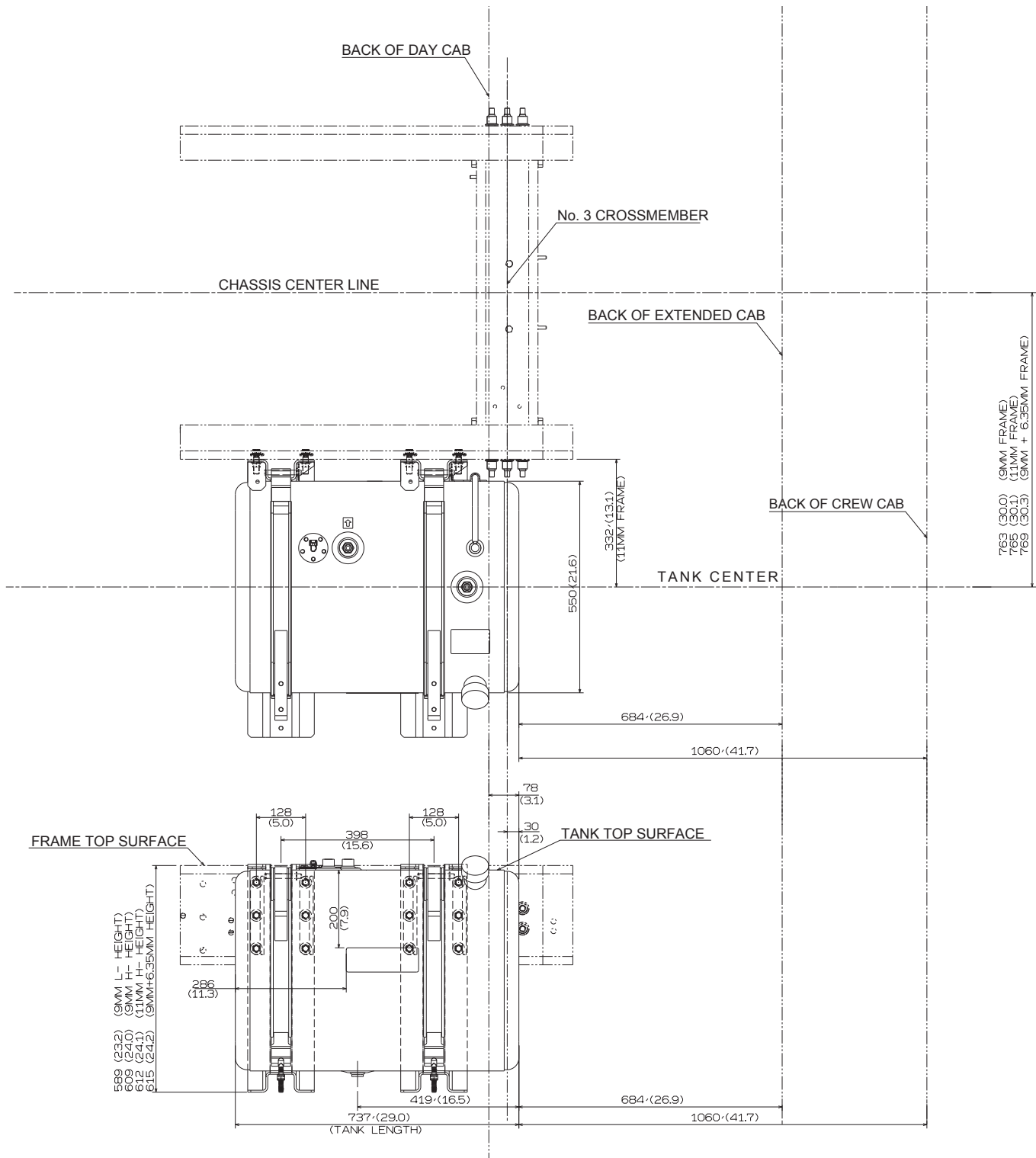
---

1. FUEL TANK
2. AIR TANK
3. EXHAUST SYSTEM

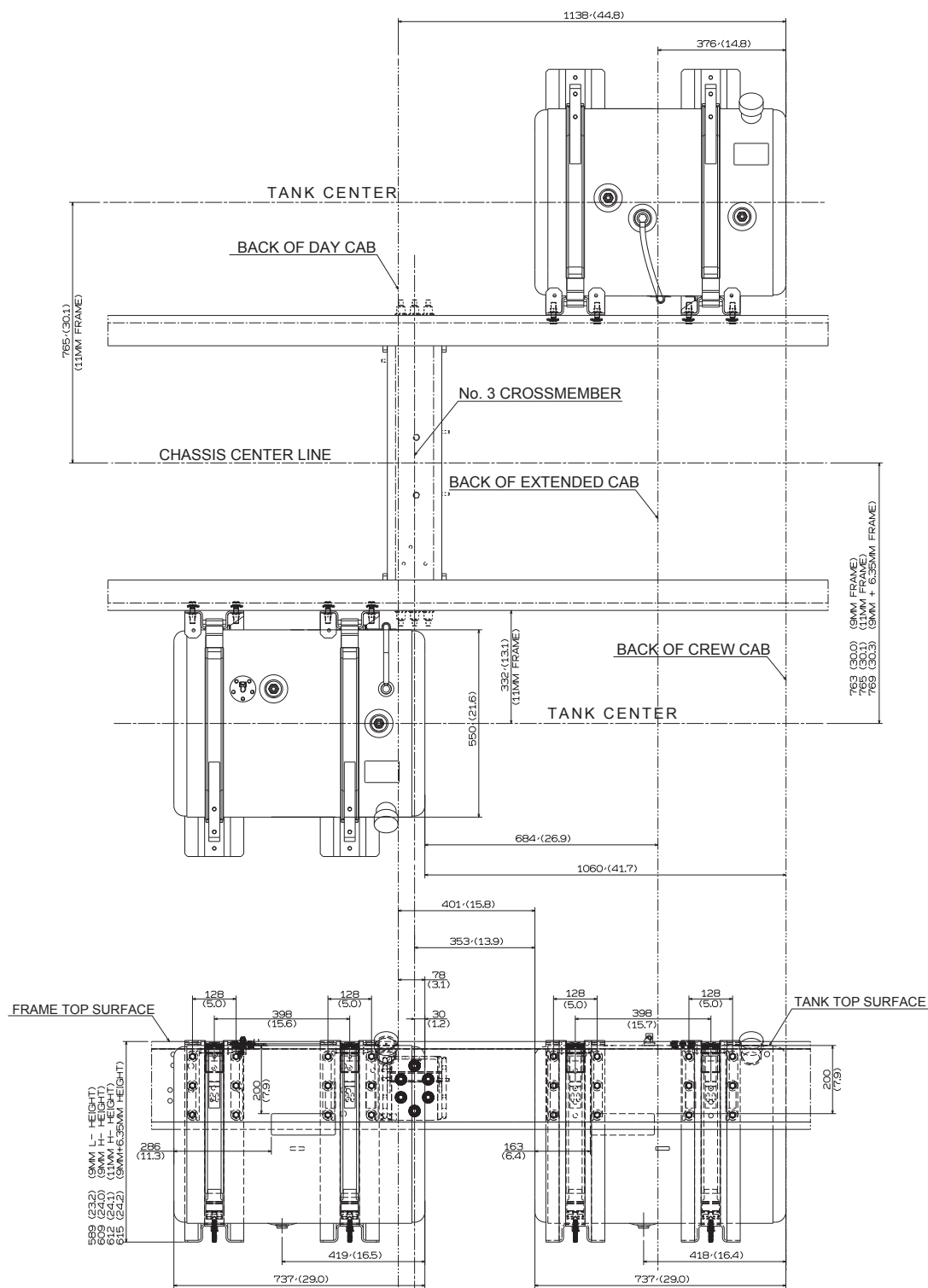
# 1. FUEL TANK

**CAPACITY : 189L (50gal)**

Unit : mm (in.)

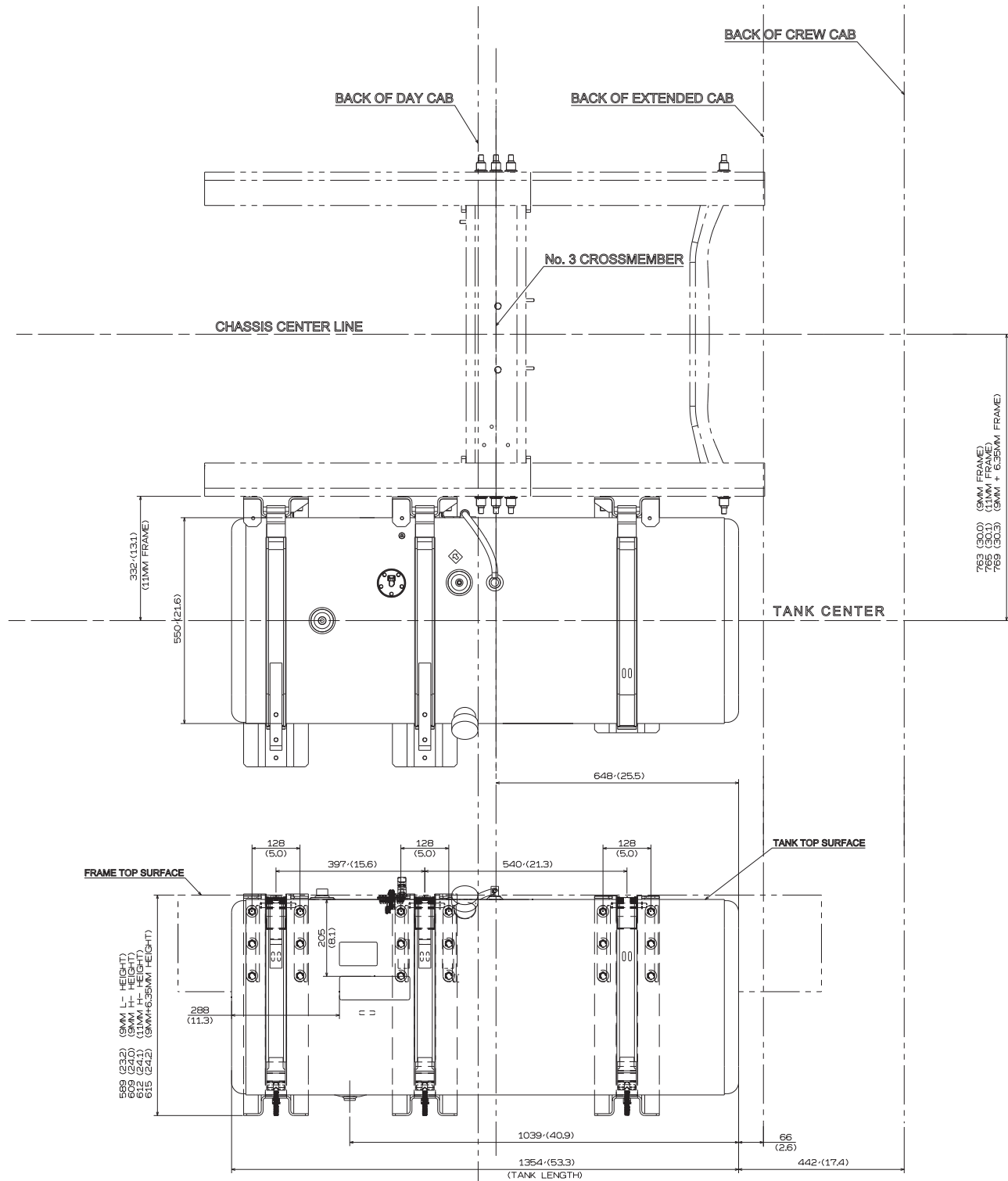


Unit : mm (in.)



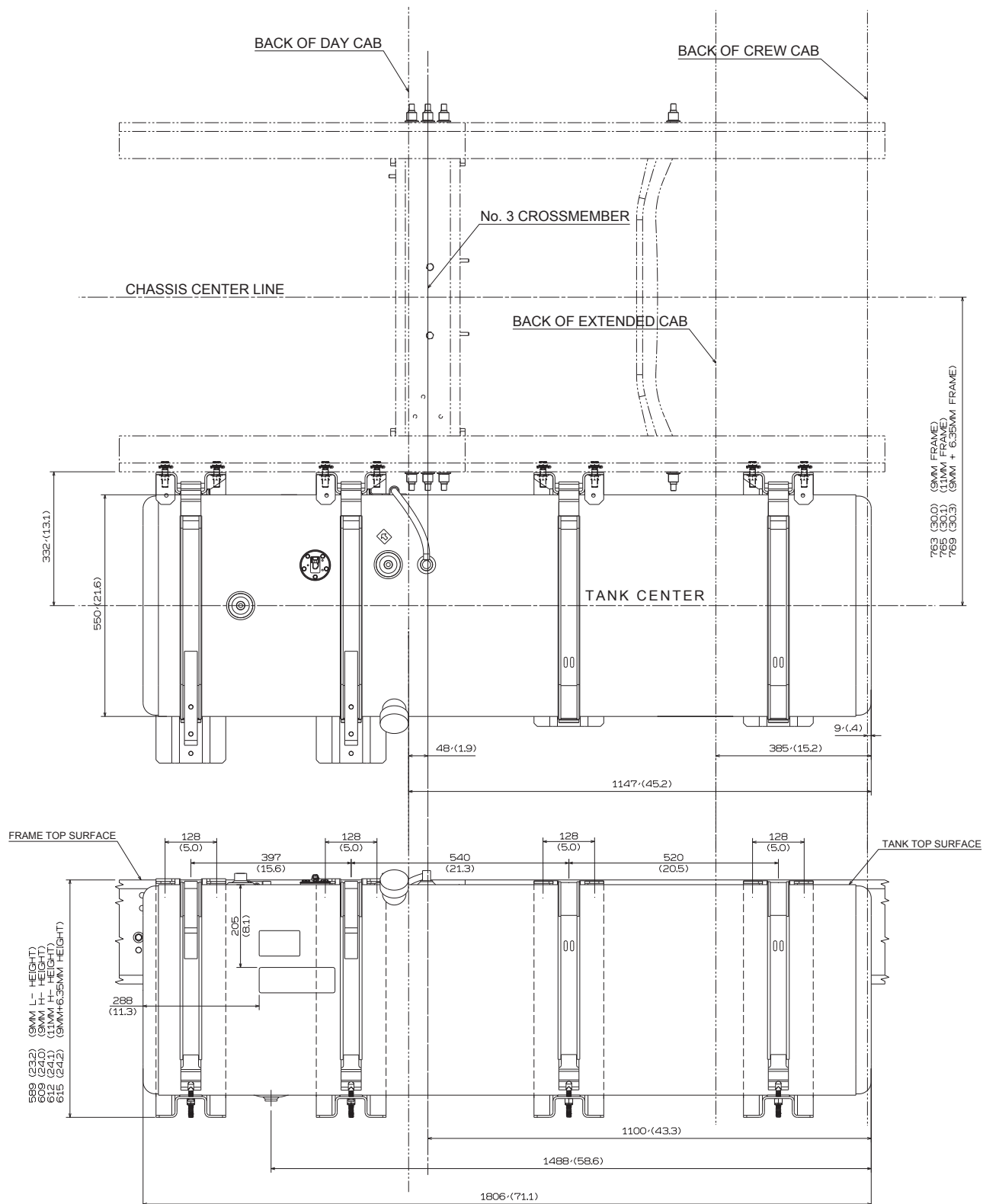
CAPACITY : 340L (90gal)

Unit : mm (in.)



CAPACITY : 454L (120gal)

Unit : mm (in.)

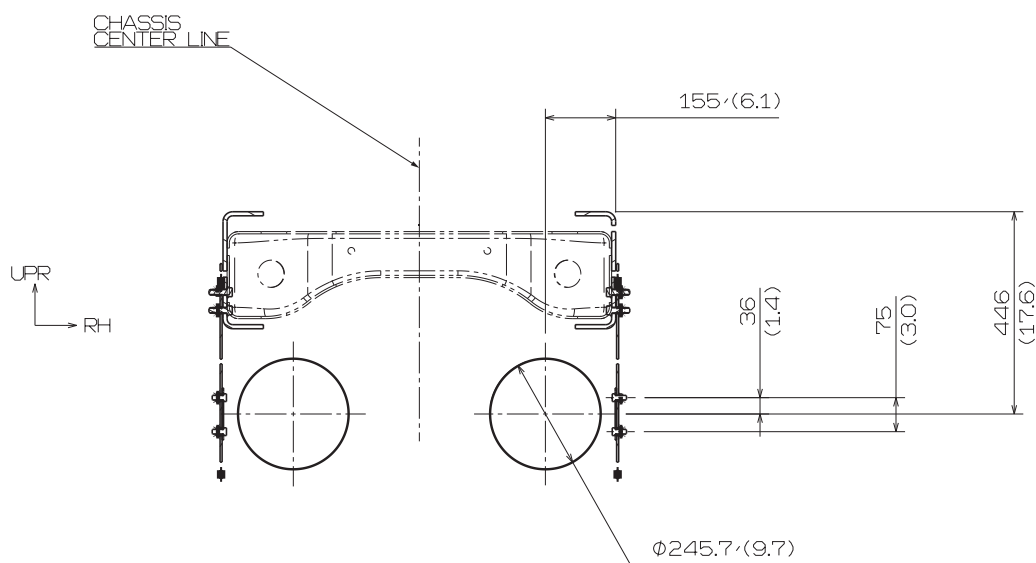
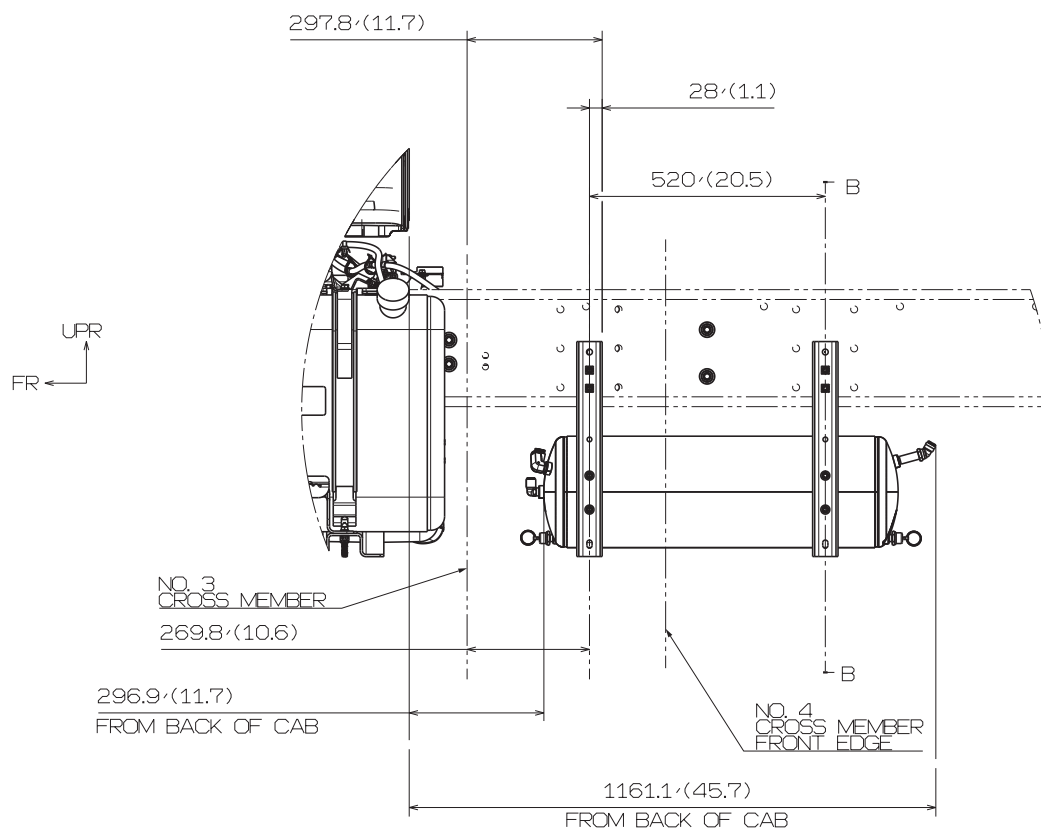


## 2. AIR TANK

MODEL : NHC2

< Day Cab >

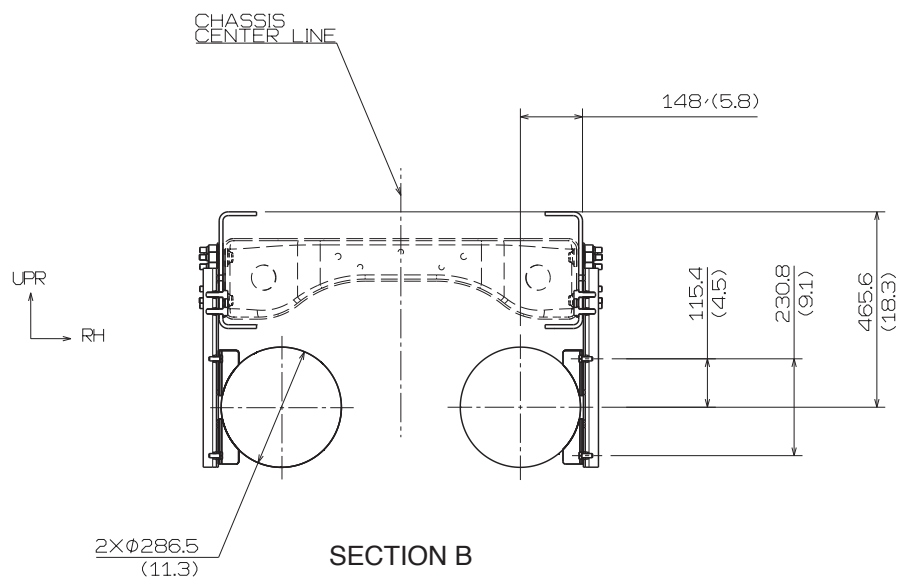
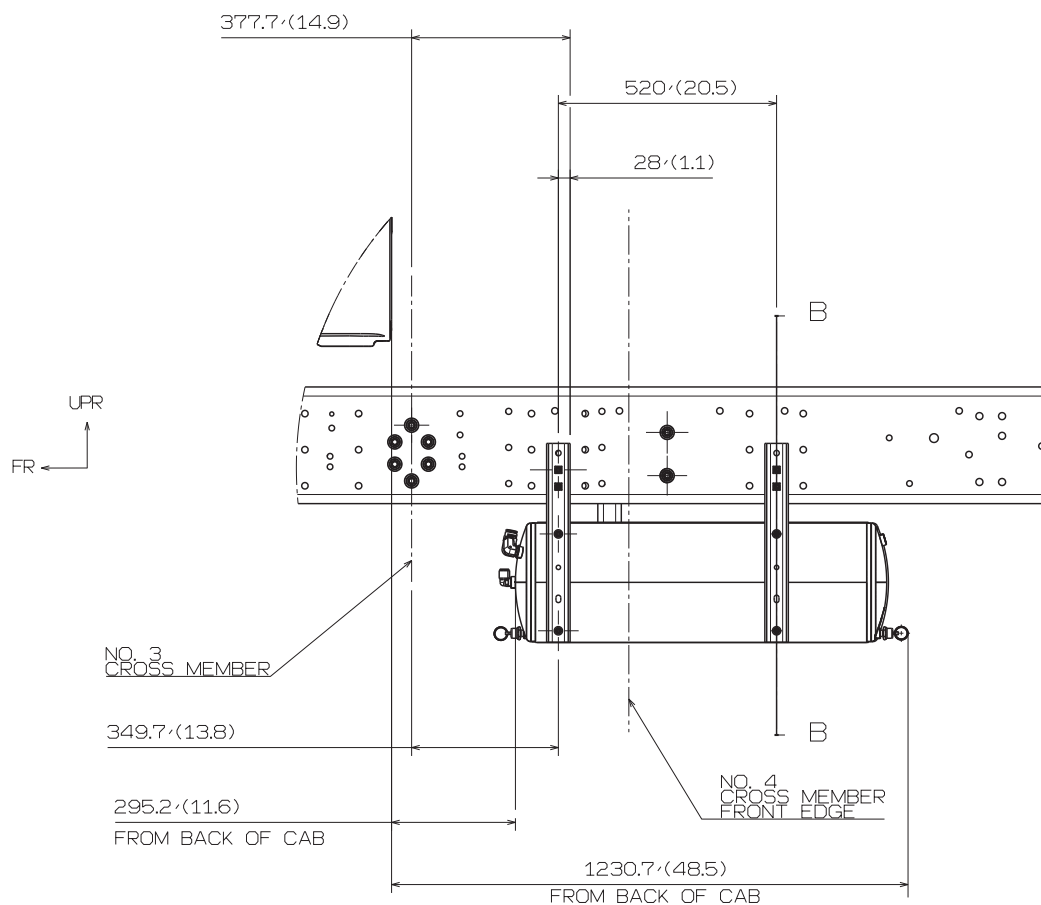
Unit : mm (in.)



SECTION B

**MODEL : NMC2**  
**< Day Cab >**

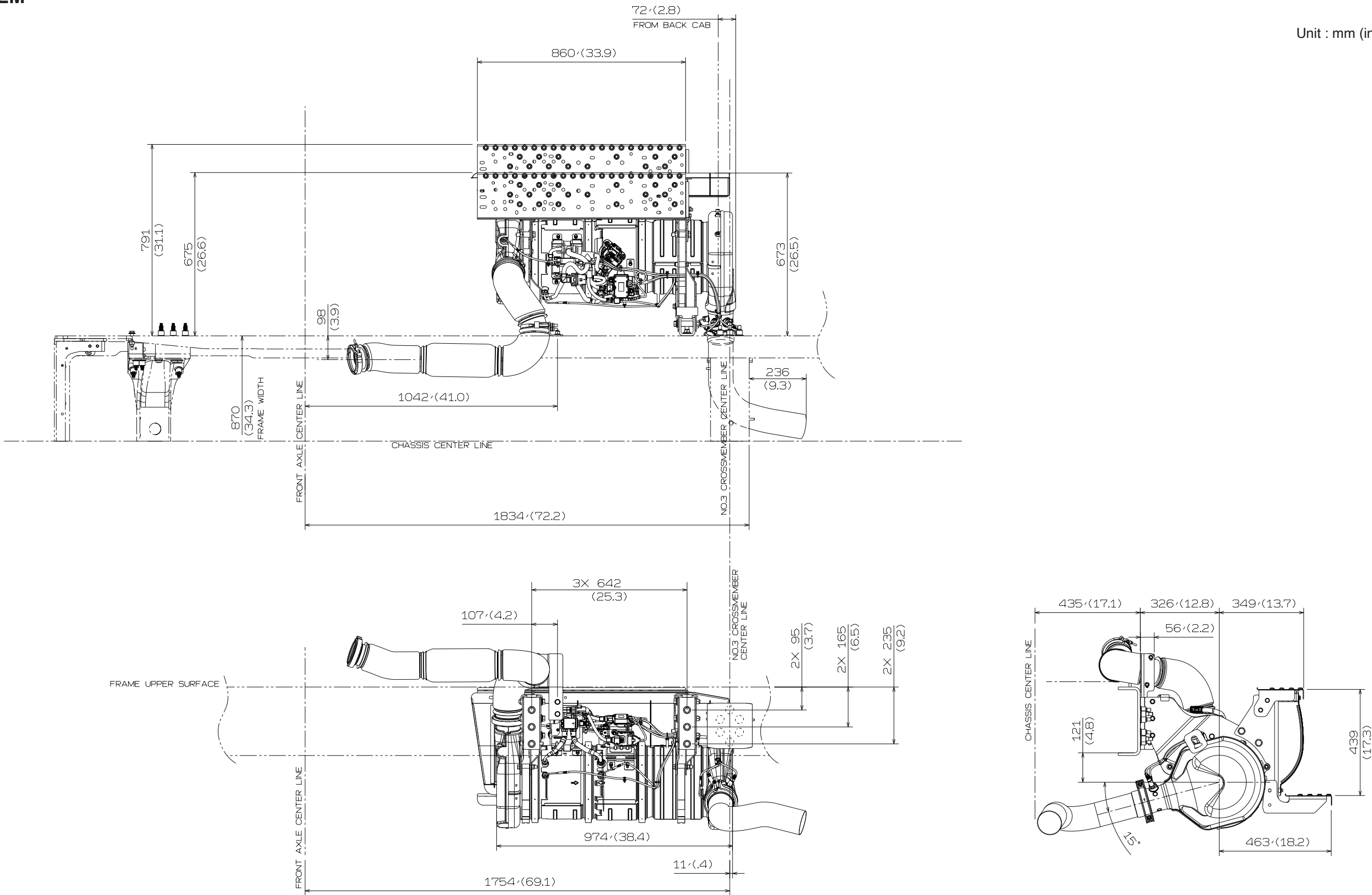
Unit : mm (in.)



3. EXHAUST SYSTEM

< Day Cab >

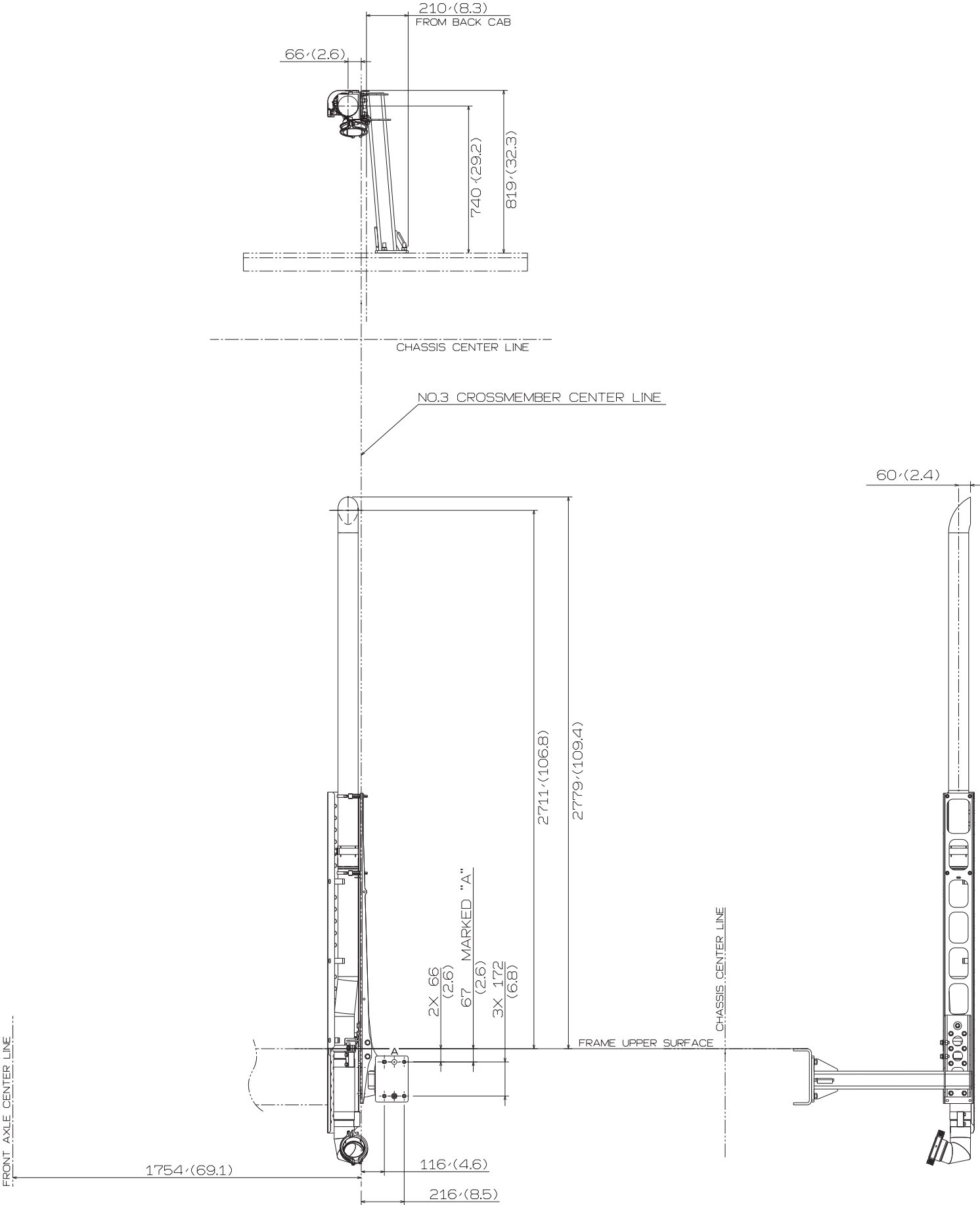
Unit : mm (in.)





VERTICAL TAIL < Day Cab ONLY >  
MODEL : NHC2, NMC2

Unit : mm (in.)



This figure shows only a different portion to standard specification.